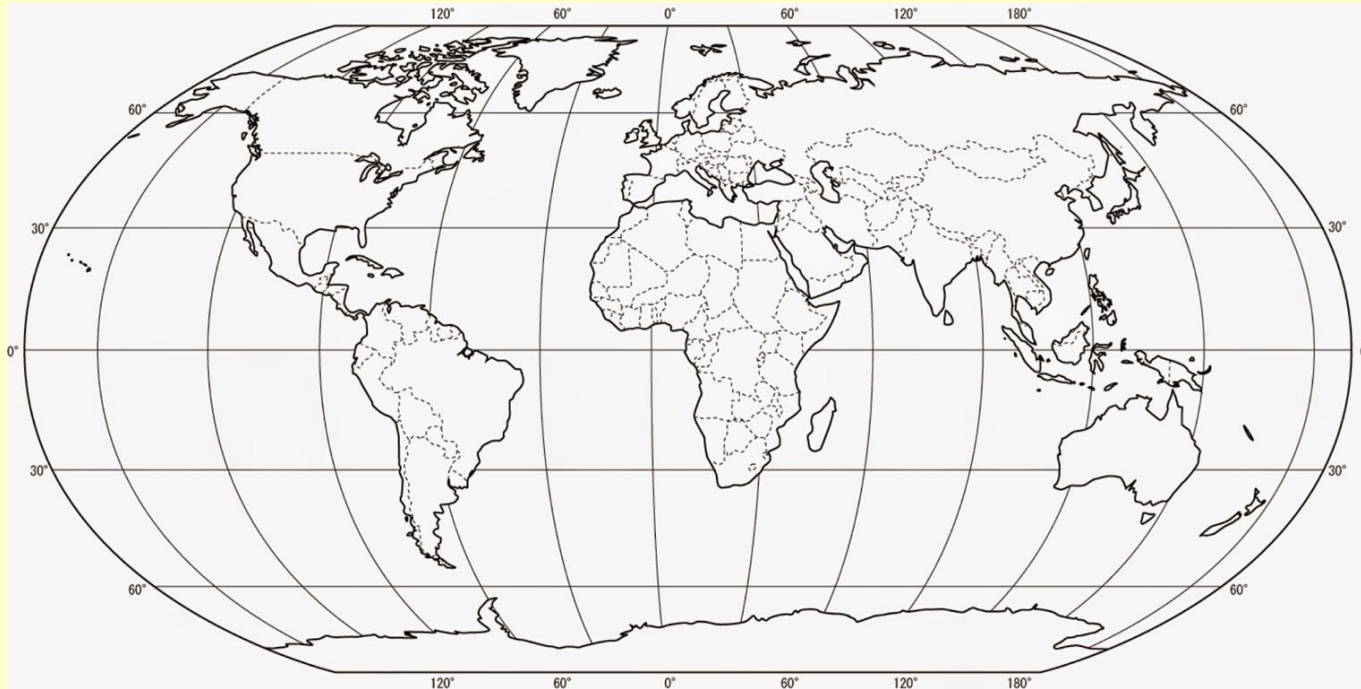


Geography (Antarctica) Lesson 1:



Identify the 7 continents.

Identify the 5 oceans.



Geography (Antarctica) Lesson 2:



1) Match the key word to the correct image:

Weather

Climate/biome



2) Identify the types of weather in each biome.

3) What climate is the UK?

Geography (Antarctica) Lesson 3:



1. What are the 2 types of lines on a world map/globe?

2. What do they do- their function?

3. Tell me

**Five
Things.**

about Antarctic.

Try to use statistics from the clip.
Consider the map of Antarctica and what it has.
Why? Hint: treaty.
Features of Antarctica? Climate?

Geography (Antarctica) Lesson 4:



1. True or false?
People live in Antarctica.
2. Why do people visit Antarctica?
3. Should people be able to live/stay in Antarctica permanently?

Geography (Antarctica) Lesson 5:



1. Before you tell me, tell your partner the 5 W's about Shackleton...



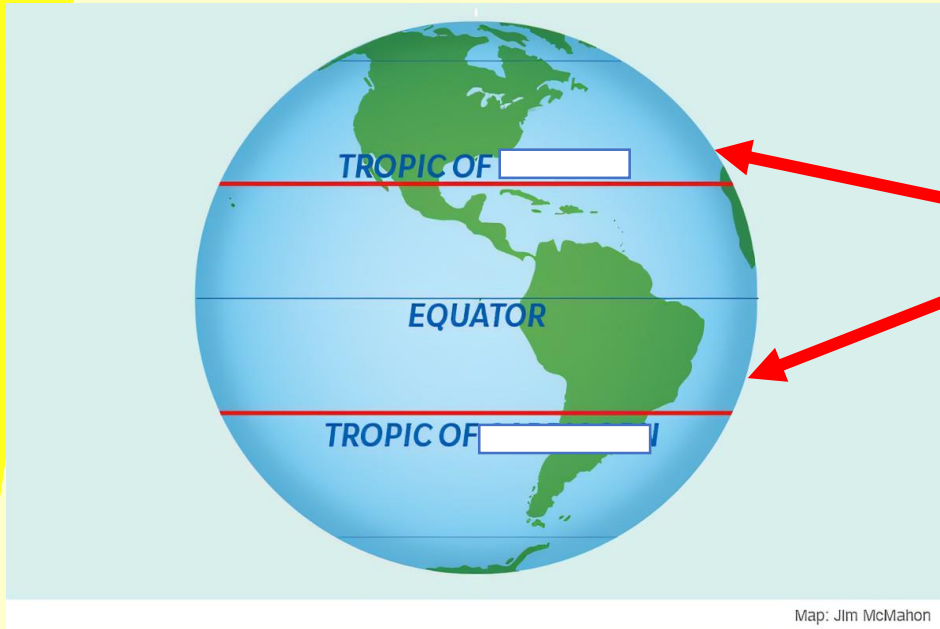
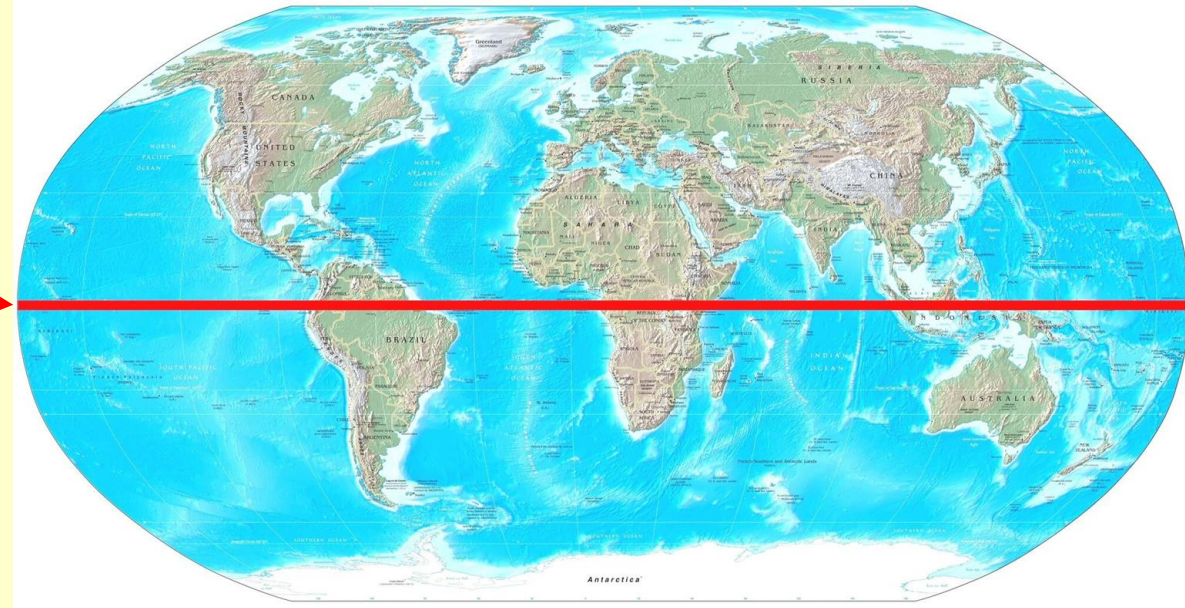
Geography (Antarctica) Lesson 6:



1. Identify the 8 compass points.

Geography (Antarctica) Lesson 7:

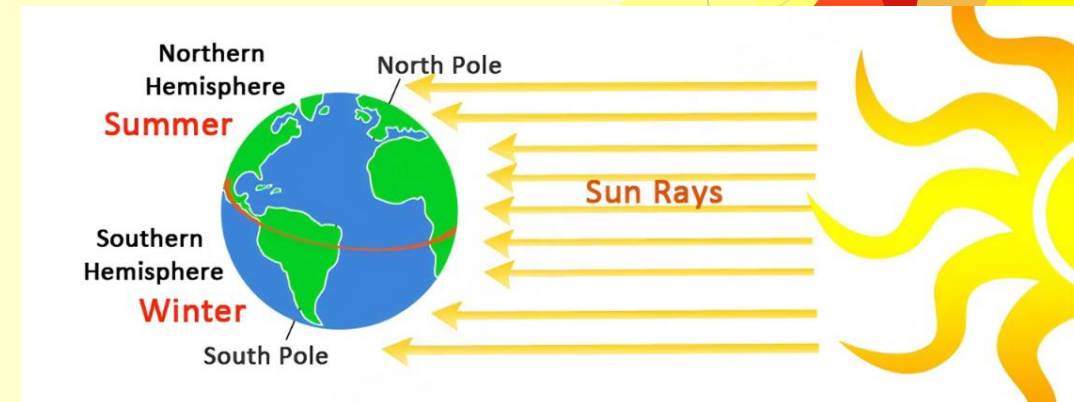
- Identify what this line represents



- Identify the names of both tropics

- What are the **two** poles called?

- When it is winter in the Northern Hemisphere, it is _____ in the Southern Hemisphere.
- When there are 24 hours daylight in the North Pole, it is S _____. When there are 24 hours of darkness it is W _____.



Geography (Rainforests) Lesson 8:



Fill in the blanks/answer the questions

1. Most of the rainforests on Earth can be located close to the ____ between the ____.
2. Name the continents where you could find a rainforest.
3. Name some countries where rainforests can be found?
4. Why do you think there are no rainforests in the UK?



Geography (Rainforests) Lesson 9:

True or false?



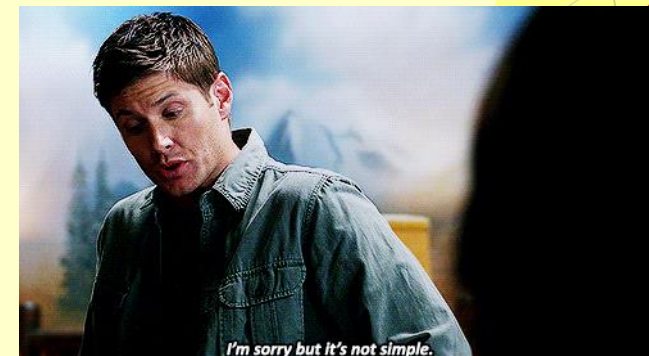
The forest floor is the top layer of the rainforest.

Explain why.

Yes, no or it's not that simple.

Will rain always hit the forest floor?

Explain why.



Geography (Rainforests) Lesson 10:

Odd one out?



Identify what 'indigenous' means.

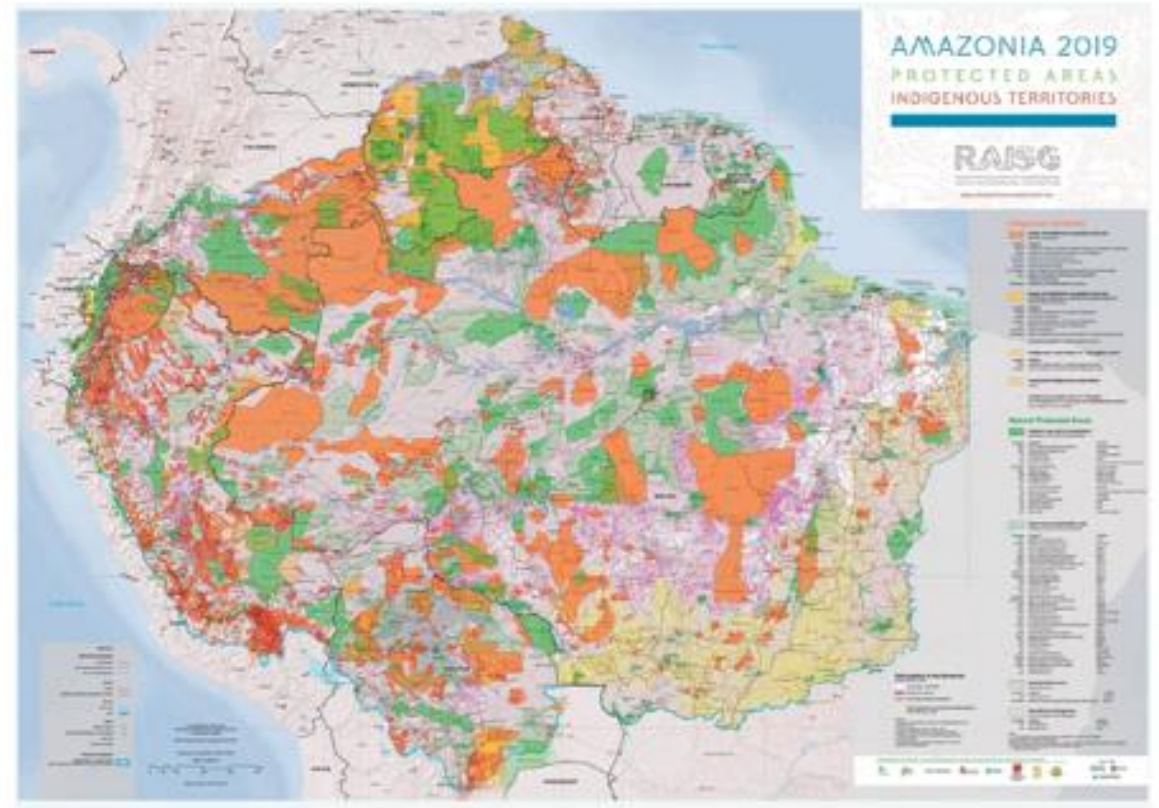
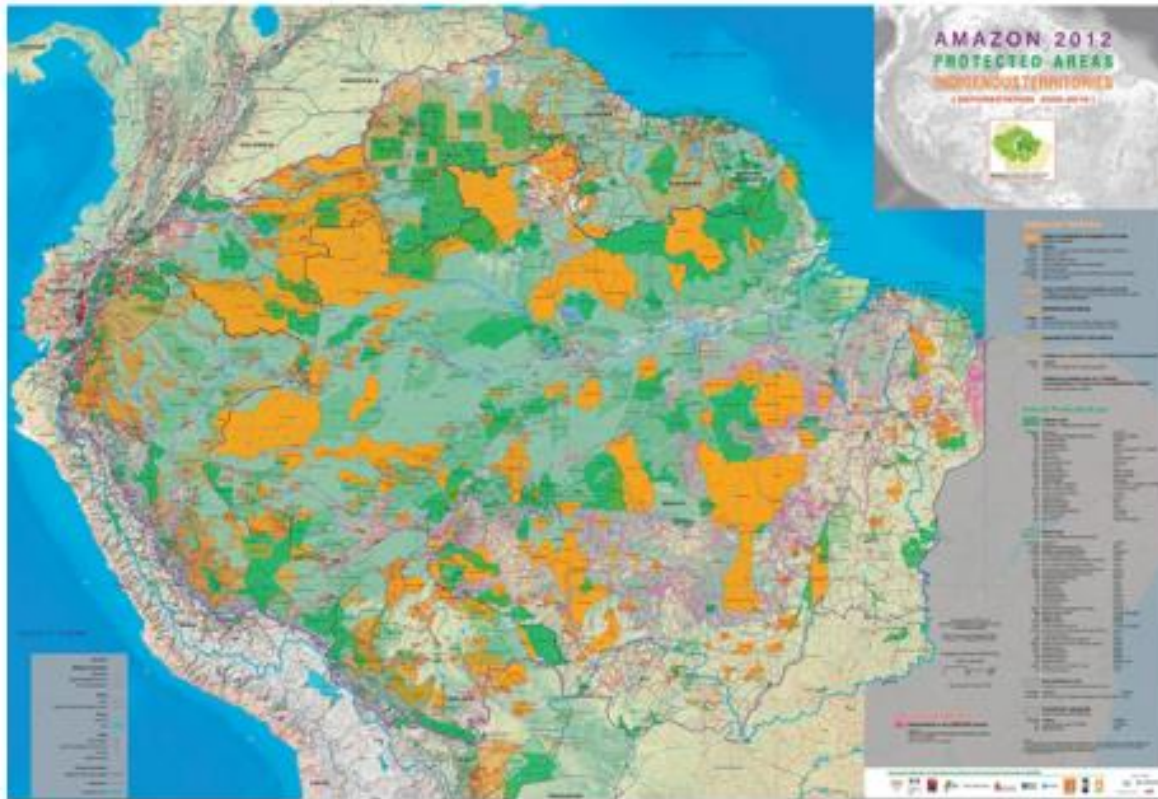
Identify 2 ways indigenous communities use rainforests.

Identify 2 negative changes that are happening to the Amazon rainforest.

Geography (Antarctica) Lesson 10 continued:

1. Identify the colour codes orange, green and white.
2. Discuss the differences and its impact.

Spot the difference:



Geography (Antarctica) Lesson 11:

1. What global issue does this picture represent?
2. Why does it happen and what is the impact?
3. What is being done to tackle this?
4. Can more be done?



Geography (Antarctica) Lesson 13:



1. What is 'fieldwork'?
2. What are questionnaires?
3. Why are they useful?

Geography (Antarctica) Lesson 13:



1. Identify the grid reference for our school.
2. How is our local woodland used?
2. Why is the woodland important to people?
3. How does this differ to indigenous communities in a rainforest?

