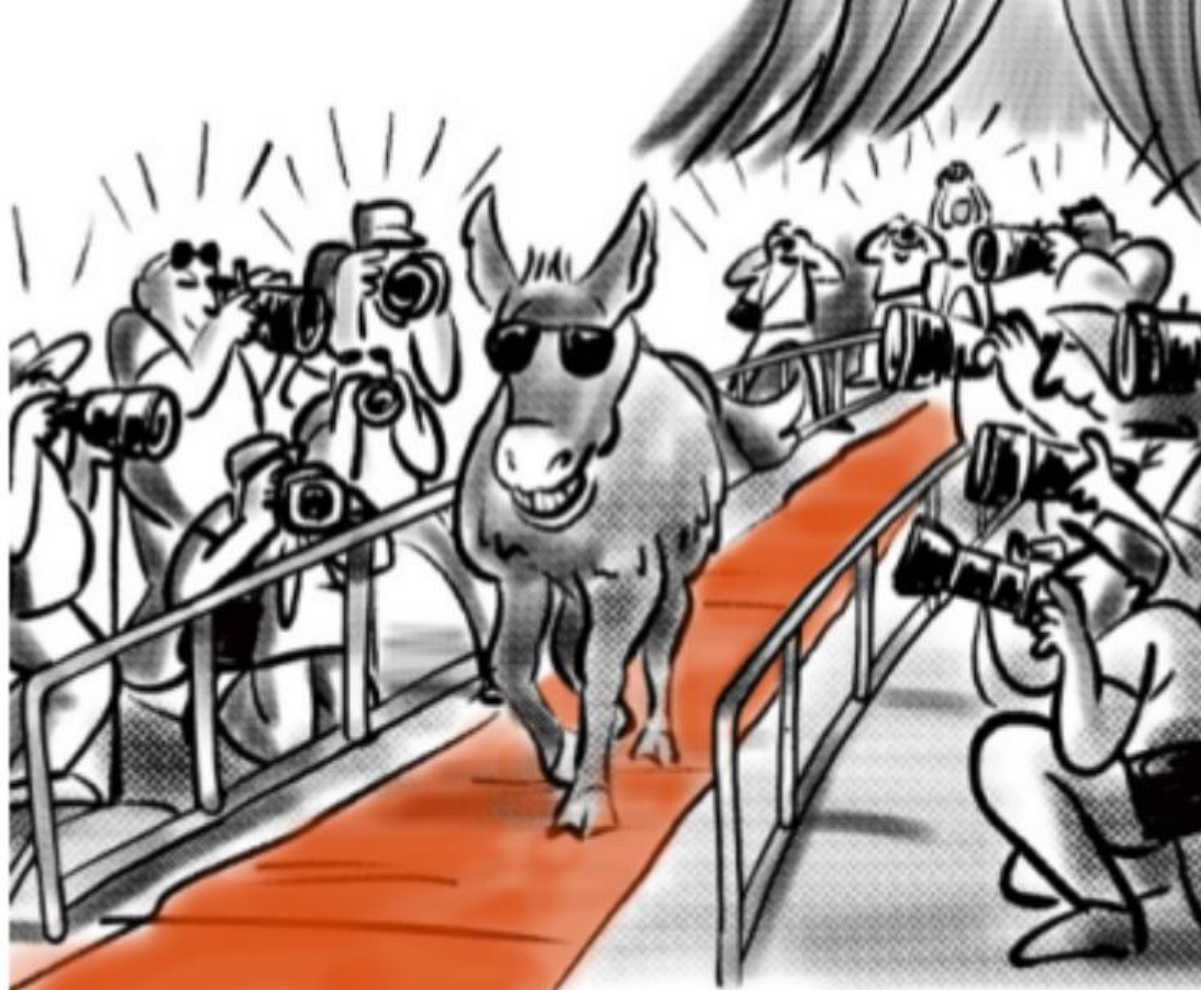


R.E. (How care is shown) Lesson 1:




1. What event is this image linked to? Why?

2. Identify when joy, sadness and hope were felt on the events linked to Holy Week.

R.E. (How care is shown) Lesson 2:



31 Jesus answered them, "Healthy people don't need a doctor. It is the sick who need a doctor. **32** I have not come to invite good people. I have come to invite sinners to change their hearts and lives!"

1. What does verse 32 mean?
2. Which Big Frieze panels link to this verse?
Hint: I can think of 3.
3.  teachings/stories that evidences Jesus' care towards others.

R.E. (How care is shown) Lesson 3:

1. Use



to explain the care shown
by local Christians.

2. How does our school
show care?



3. Who is she? How did she
care?

The kettle is on
the heating is too.
Free refreshments,
and space to chat.

St. Paul's Church, Jarrow



R.E. (How care is shown) Lesson 4:

True or false?
Only Christians show care to others?

Match the photograph to its religion of how care is shown.



Islam

Judaism

Hinduism