



Jarrow Cross Church of England Primary School

“Encourage one another and Build each other up.”

(Thessalonians 5:11)

Newsletter 1: Friday 9th January

Welcome back to school where we are now beginning the Spring term! At the moment, the weather is anything but spring-like however it was lovely to be able to play in the fresh snow on Tuesday as you can see from the photos below.



Key Dates for January 2026

- Tuesday 13th Y2 Cheerleading at the Urban Factory
- Thursday 15th and Friday 16th Y6 Glaciology at Northumbria University
- Thursday 22nd Kate Osbourne MP assembly
- Monday 26th and Tuesday 27th Y3/4 That History Bloke: Tudors
- Tuesday 27th Dental check for Reception and Year 1
- Wednesday 28th Vex Go competition Y5
- Friday 30th Friends of Jarrow Cross Friday Social

Important Staffing announcement

At the end of this half-term, Miss Schofield will sadly be leaving Jarrow Cross.

She has been an outstanding teacher and leader over the last twenty years and has played a significant role in the many successful Ofsted and Church inspections we have experienced in this time.

Miss Schofield is leaving teaching but is continuing to work within education.

Over the next few weeks, we will be recruiting a replacement teacher who will work in Year 2 until the end of the academic year.



Jarrow Cross Church of England Primary School

“Encourage one another and Build each other up.”

(Thessalonians 5:11)



Parking Concerns at Pickup Time

Can I please ask for respect and consideration towards our neighbours on Borough Road. I received a complaint in the last week of term from a resident who couldn't park on their driveway as a parent had parked on it. Residents recognise that there are pinch points where it will be busy, but please do not block access or use residents' driveways.

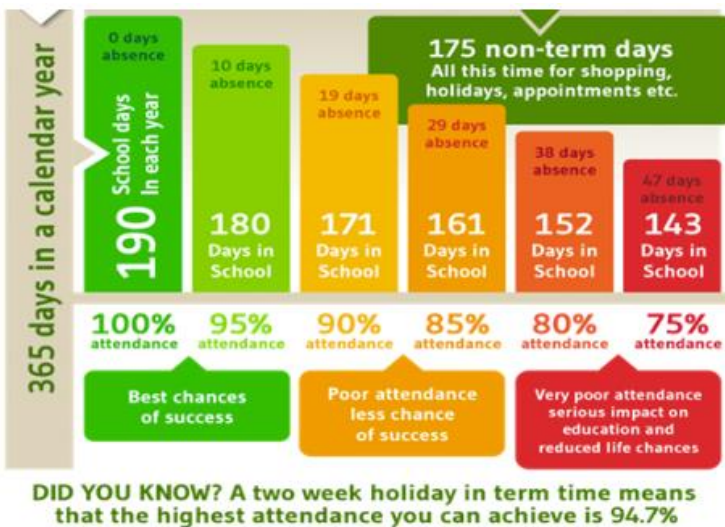
Attendance

Autumn term attendance data



Attendance by Year Group

Reception: 90.7%	Year 1: 96.9%	Year 2: 96.1%
Year 3: 94.9%	Year 4: 95.0%	Year 6: 94.1%



Next week you will receive information about your child's attendance so far this academic year. The image on the left highlights the need for good attendance of 95% and above. Academic outcomes are closely aligned with good attendance. Research shows that at KS2, pupils who attended school nearly every day in Year 6 (with an attendance rate of 95-100%) were 1.3 times more likely to achieve the expected standard in reading, writing and maths compared to pupils who only attended 90-95% of the time. This means missing just 10 days of year 6 reduced the likelihood of reaching the expected standard by around 25%.



Jarrow Cross Church of England Primary School

“Encourage one another and Build each other up.”

(Thessalonians 5:11)



In the autumn term, we have worked collectively on the Lord’s Prayer Journey. During whole school worship we have covered a variety of themes from our annual exploration of our school vision and values to mutual respect and tolerance. We are working hard to see ‘Value in Everyone’ and recognise that treating others how we want to be treated, is a key part of mutual respect.

We have started this term exploring the Epiphany and particularly how it is celebrated in France. In the coming weeks, we will review our school values, reflect on Jesus’ baptism and consider how we can be courageous. Through all of this, we work together to encourage one another and build each other up.

During this academic year, your child’s teacher will invite you to participate in a class worship. This will be a short session of around 15minutes, either at the start or end of the day, where you can join us and experience a short time of prayer and reflection. Please look out for further details on dojo.

You Said	We Did / will do
More opportunities for trips / discos	Termly trips or visits from experts are part of curriculum planning. Summer term discos to be reintroduced
Pupil Voice – more chances for children to share ideas	School Council elections will happen in the Spring Term. Mini Police introduced New working relationship with Eat Smart for pupil involvement in eco and climate action plans. Social Justice – pupil ideas for helping others as part of a Church school (e.g. Y1 cereal drive)
Learning Support – more targeted interventions for pupils with SEND (Special Educational Needs and Disabilities)	Lesson adaptations part of our school improvement plan. This has been highlighted as a strength by a recent visit from our School Improvement Advisor.
Clarity on pupil progress	Teachers shared targets during parents meetings as well as pupil passports for pupils with SEND.
Rewards System seems advantaged towards pupils who don't struggle.	Dojo points, class awards and school vision awards celebrate achievements in all areas of school life and take into account individual starting points.
Various communication methods needed.	New Facebook and Instagram pages. Dojo messages sending specific year group messages. Letters on dojo and website provide key dates. Calendar on school website updated regularly.
More variety in after-school clubs	Clubs will change term by term and in most cases are down to staff volunteering. Spring term will have equal numbers of clubs for KS1 and KS2.
Face-to-face parent meetings	Introduced for the autumn term.

Thank you to everyone who responded to our parent/carer survey in September. I said that we would respond to specific suggestions in due course and you can see these in the table to the left.

As a leadership team, we are always willing to listen to your views and I wanted to remind you that if you have any concerns to please bring them directly to staff.

I hope you have found the new newsletter format engaging. In time this will evolve and hopefully begin to have some input from children throughout the school.

Mr Taggart